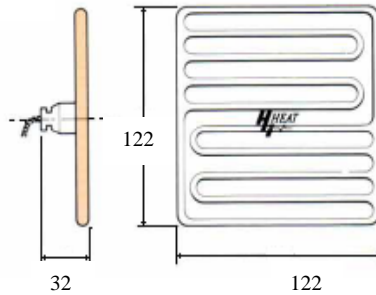




# Ceramic Infrared Panel Radiators

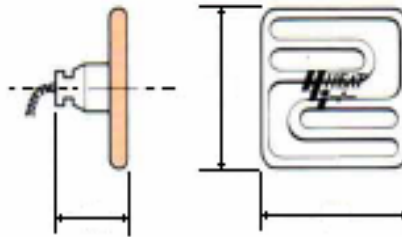
Hi- Heat Ceramic Elements are used throughout the world for many processes by a variety of industries. We have experience in providing the correct technical solution for many heating problems. This Hi- Heat range's main use is Plastic Forming,

## SFE



<b>Ratings (watts)</b>	150	200	250	300	350	400	500	650	750	1000
<b>Mean Surface temperature</b>	235	300	340	370	400	420	450	520	555	600
<b>Peak Wave Length</b>	5.7	5	4.7	4.5	4.3	4.1	4	3.6	3.5	3.3

## QSF



<b>Ratings (watts)</b>	50	150	250
<b>Mean Surface temperature</b>	175	450	590
<b>Peak Wave Length</b>	6.4	4	3.3

**Victory Lighting (UK) Ltd**

Quay West, Salamander Quay, Harefield, Uxbridge, Middlesex, UB9 6NZ

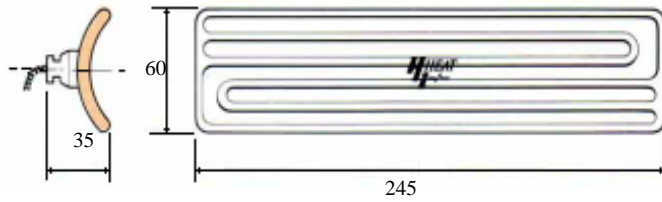
[www.victorylighting.co.uk](http://www.victorylighting.co.uk)

Tel +44 (0) 1895 821 821

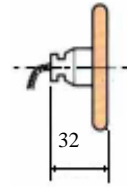
Fax +44 (0) 1895 821 822

**FSC**

(Curved version)

**FSF**

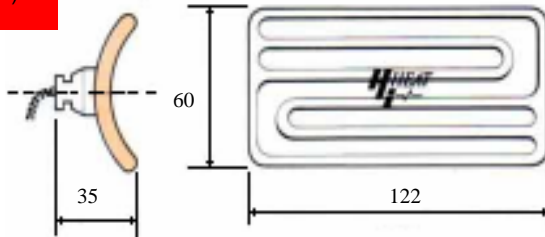
(Flat version)



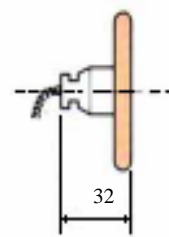
<b>Ratings (watts)</b>	<b>150</b>	<b>250</b>	<b>300</b>	<b>350</b>	<b>400</b>	<b>500</b>	<b>650</b>	<b>750</b>	<b>1000</b>
<b>Mean Surface temperature</b>	<b>235</b>	<b>340</b>	<b>370</b>	<b>400</b>	<b>420</b>	<b>450</b>	<b>520</b>	<b>555</b>	<b>600</b>
<b>Peak Wave Length</b>	<b>5.7</b>	<b>4.7</b>	<b>4.5</b>	<b>4.3</b>	<b>4.1</b>	<b>4</b>	<b>3.6</b>	<b>3.5</b>	<b>3.3</b>

**HSC**

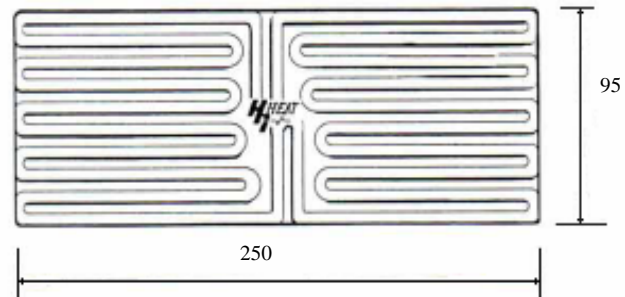
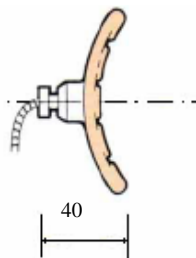
(Curved version)

**HSF**

(Flat version)



<b>Ratings (watts)</b>	<b>125</b>	<b>150</b>	<b>200</b>	<b>250</b>	<b>325</b>	<b>375</b>	<b>400</b>	<b>500</b>
<b>Mean Surface temperature</b>	<b>340</b>	<b>370</b>	<b>420</b>	<b>450</b>	<b>520</b>	<b>540</b>	<b>570</b>	<b>600</b>
<b>Peak Wave Length</b>	<b>4.7</b>	<b>4.5</b>	<b>4.1</b>	<b>4</b>	<b>3.6</b>	<b>3.5</b>	<b>3.4</b>	<b>3.3</b>

**LSC**

<b>Ratings (watts)</b>	<b>1500</b>
<b>Mean Surface temperature</b>	<b>600</b>
<b>Peak Wave Length</b>	<b>3.3</b>

**Victory Lighting (UK) Ltd**

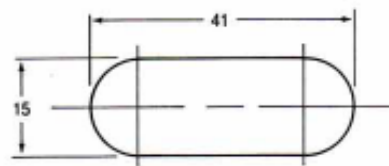
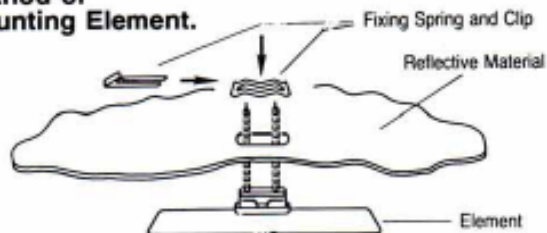
Quay West, Salamander Quay, Harefield, Uxbridge, Middlesex, UB9 6NZ

[www.victorylighting.co.uk](http://www.victorylighting.co.uk)

Tel +44 (0) 1895 821 821

Fax +44 (0) 1895 821 822

### Method of Mounting Element.



CUT-OUT FOR MOUNTING LUG  
(shown actual size)

Product	Wattage (W)	Volts (V)
<b>SFE</b>		
SFE150w230v	150	230
SFE200w230v	200	230
SFE250w230v	250	230
SFE300w230v	300	230
SFE350w230v	350	230
SFE400w230v	400	230
SFE500w230v	500	230
SFE650w230v	650	230
SFE750w230v	750	230
SFE1000w230v	1000	230
<b>QSF</b>		
QSF50w230v	50	230
QSF150w230v	150	230
QSF250w230v	250	230
<b>FSC</b>		
FSC150w230v	150	230
FSC250w230v	250	230
FSC300w230v	300	230
FSC350w230v	350	230
FSC400w230v	400	230
FSC500w230v	500	230
FSC650w230v	650	230
FSC750w230v	750	230
FSC1000w230v	1000	230
<b>FSF</b>		
FSF150w230v	150	230
FSF250w230v	250	230
FSF300w230v	300	230
FSF350w230v	350	230
FSF400w230v	400	230
FSF500w230v	500	230
FSF650w230v	650	230
FSF750w230v	750	230
FSF1000w230v	1000	230

Product	Wattage (W)	Volts (V)
<b>HSC</b>		
HSC125w230v	125	230
HSC150w230v	150	230
HSC200w230v	200	230
HSC250w230v	250	230
HSC325w230v	325	230
HSC375w230v	375	230
HSC400w230v	400	230
HSC500w230v	500	230
<b>HSF</b>		
HSF125w230v	125	230
HSF150w230v	150	230
HSF200w230v	200	230
HSF250w230v	250	230
HSF325w230v	325	230
HSF375w230v	375	230
HSF400w230v	400	230
HSF500w230v	500	230
<b>LSC</b>		
LSC1500w230v	1500	230

Victory Lighting (UK) Ltd

Quay West, Salamander Quay, Harefield, Uxbridge, Middlesex, UB9 6NZ

[www.victorylighting.co.uk](http://www.victorylighting.co.uk)

Tel +44 (0) 1895 821 821

Fax +44 (0) 1895 821 822