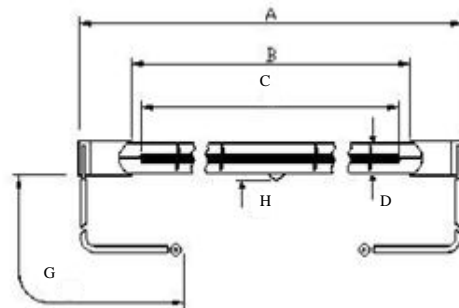


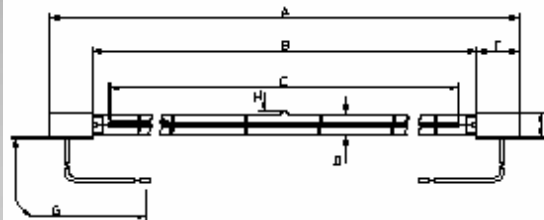
Lamps for the PET Industry

Victory have introduced a new range of Linear Quartz Lamps for the PET Industry. Our lamps have a **long life**, are **light weight** and can **instantly** be turned **on** and **off**. Our range includes lamps with a **white reflector coating**. Metal Capped Lamps and Ceramic Reflector Coating Lamps can be used in various machines including **Krones, Krupp and Coroplast** Machines. SK15 Lamps with reflector coating can also be used in various machines such as **Sidel** Machines

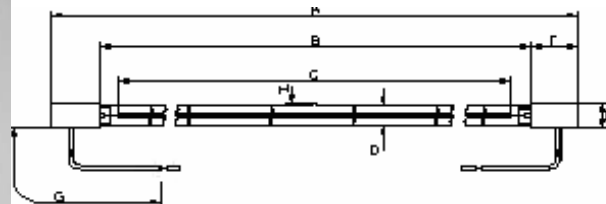
Metal Capped Lamp



Ceramic Reflector Coating



Sk15 Lamp Reflector Coated



Victory Lighting (UK) Ltd

Quay West, Salamander Quay, Harefield, Uxbridge, Middlesex, UB9 6NZ

www.victorylighting.co.uk

Tel +44 (0) 1895 821 821

Fax +44 (0) 1895 821 822

Product	Watts (W)	Volts (V)	Base	Tube
Metal capped Lamp				
64141223	1200	144	Metal	Clear
64141622	1600	144	Metal	Clear
Ceramic Reflector Coated Lamps				
64126050	600	120	Ceramic	Reflector
64141251	1200	144	Ceramic	Reflector
64231251	1200	235	SK15	Reflector
64141650	1600	144	Metal	Reflector
64231652	1600	235	SK15	Reflector
SK15 lamp Reflector Coated				
54242053	2000	240	Ceramic	Reflector
64402550	2500	400	SK15	Reflector
64242550	2500	240	SK15	Reflector
64403052	3000	400	SK15	Reflector
64243055	3000	240	SK15	Reflector

A	B	C	D	E	F	G	H	Equivalent
222±2	176	157	10.5	-	-	150	5 Max	13561Y/00 QIHQ44- 1200/S
222±2	176	157	10.5	-	-	150	5 Max	13568Y/00 QIH1441600/S
130±4	90	70	10.5	15	20	150	5 Max	195992
222±2	180±2	157	10.5	15	20	150	5 Max	-
222±2	180±2	157	10.5	15	20	140	5 Max	-
222±2	176	157	10.5	-	-	15	5 Max	13561Z/98
222±2	180±2	157	10.5	15	20	140	5 Max	14135Z/98
353±2	306	230	10.5	15	20	230	5 Max	13213Z/98 14103Z/98 QIH240- 2000/ZD2
380±5	340	320	10.5	15	20	230	5 Max	14106Z/98
354±2	314	280	10.5	15	20	230	5 Max	14143Z/98
380±5	340	320	10.5	15	20	230	5 Max	14111Z/98
354±2	314	280	10.5	15	20	230	5 Max	14144Z/98

Victory Lighting (UK) Ltd

Quay West, Salamander Quay, Harefield, Uxbridge, Middlesex, UB9 6NZ

www.victorylighting.co.uk

Tel +44 (0) 1895 821 821

Fax +44 (0) 1895 821 822